



Week 2 Term 1, 2024

Dear Parents/Guardians,

It was wonderful to see the students return to school last week, settling in and eager to catch up with friends.

Parent/Teacher Interviews

Parent Teacher interviews will be held on Tuesday the 13th of February. The purpose of these 15-minute interviews is to provide an opportunity for you to meet your child's teacher and discuss learning goals for your child. Interviews will be held in Room A – The Grade 4/5/6 classroom. All booking for Parent/Teacher interviews will be made using the COMPASS App. The 'Window for booking interviews' will open on Monday 5th February at 10:00am and will close on Monday 12th February at 3:00pm. All students are required to have this meeting on top of any IEP or SSG scheduled. If you are unable to make an interview for this day, please see your child's classroom teacher to make arrangements for one to be held at a mutually agreeable time.

Student details

Student contact details forms will be handed out at the parent teacher interviews. We ask that all parents ensure the contact details/information on these forms be updated so that we have correct contact information. It is vital that if you change your mobile phone number, emergency contact people, residential or email address that you ensure the school is notified of the changes. **It is the responsibility of all families to ensure that the school has current and up to date contact details for parents and emergency contacts.**

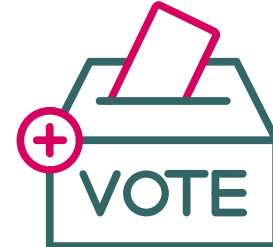
Coimadai PS Parents and friends—Thursday 15th February

Coimadai PS Parents and friends is a vibrant group of people who help contribute to making the best school possible school for your children. All parents are welcome. By sharing your skills, time and efforts you can become apart of a rewarding and influential group. What ever time / contribution you can provide, it will be gratefully accepted by our group. For more information please see Regan Montgomery, Sara Ray or Kristie Lynch for more information. The next meeting and AGM for Parents and Friends will be on Thursday the 15th February at 9:00am in the library.

Cyber Safety

Bacchus Marsh Bendigo Community Bank and Bacchus Marsh Blue Light Community have joined forces to enable all students and parents of the entire Bacchus Marsh community the opportunity to participate in Cyber safety initiatives, keeping our children safer while online. The Bendigo Bank has generously donated all the funds for every family to participate in The Inform and Empower Cyber safety Program. Children will participate in the incursions at school and all parents are invited to attend the parent information session being held at the Shire Hall in Bacchus Marsh on Tuesday 19th March. Informing and empowering parents to be better educated and aware of children's activities on social media platforms is a great area of concern and I strongly encourage all parents to attend. More details will be published in the coming weeks.

School Council



Calls for nominations for School Council are now sought.

What is a school council and what does it do?

All government schools in Victoria have a school council.

They are legally constituted bodies that are given powers to set the key directions of a school within statewide guidelines. In doing this, a school council is able to directly influence the quality of education that the school provides for its students.

Who is on the school council?

For most school councils, there are three possible categories of membership:

A mandated elected Parent category - more than one-third of the total members must be from this category. Department of Education and Training (DET) employees can be Parent members at their child's school as long as they are not engaged in work at the school.

A mandated elected DET employee category - members of this category may make up no more than one-third of the total membership of school council. The principal of the school is automatically one of these members.

An optional Community member category - members are coopted by a decision of the council because of their special skills, interests or experiences. DET employees are not eligible to be Community members.

Generally, the term of office for all members is two years. The term of office of half the members expires each year, creating vacancies for the annual school council elections.

The members of School Council for 2023 were **Jamie Fearn, Blair Dellemyjn, Regan Montgomery, Anna Simcocks, Jodie Addamo, Annie Ewings, Renea Williamson and Sam Hindes**. Jasmin Allender was the Parents and Friends representative. We thank all members for their commitment and contributions made last year. Positions on council are for a 2 year period, with half of the members being elected each year. Sam, Sara, Anna and Annie's 2 year positions have now been completed. Nominations are now being called for positions on School Council. Retiring members are welcome to re-nominate. If you would like to nominate some one or yourself please come to the office and ask for a nomination form. All nominations need to be lodged by Friday the 23rd of February. If more than four parent nominations are received then an election will be organised. We are proposing to hold our first school Council Meeting on Tuesday the 5th of March.

OSH CLUB - Out of school hours care program

OSH Club provides child care facilities each morning and afternoon, providing breakfast and afternoon snacks to all students who attend. This program is highly subsidised by the government. Fees are calculated on a sliding scale depending on your income. Enrolment for the program is free and there are no obligations to use the service. I highly recommend that all families enrol so that in case of an emergency or if you are running late then your children can be supervised safely. Students who arrive at school before 8:30am will be asked to join the OSH Club program as our teaching staff will not be supervising students before 8:45am. Details about OSH Club can be found in this newsletter, on our school website and at the school office.



WHOLE SCHOOL SPORTS DAY— 15TH MARCH

Coimadai PS will be joining Balliang East PS, St. Patrick's Gordon and St Bridgit's Ballan for a small school's athletics/ sports day.

This day will take place at Mason's Lane, Bacchus Marsh. Parents are welcome to come along and cheer on our students as they compete so mark it on your calendar. More information about this day will be sent home in the near future.



Parents and Friends

This year the Parents and Friends Committee hope to hold many activities that help foster and maintain strong community relationships. Our Parents and Friends Committee is a wonderful group of people who need your help to create the best school for your children. By sharing your skills, time and efforts you can become part of a very rewarding and influential group. Please see Regan Montgomery, Blair Dellelijn, Sara Ray or Anna Simcocks if you would like more information on the role of Parents and Friends.

The Parents and Friends AGM and first meeting for 2024 will be held on Thursday the 15th of February at 9:00 in the Library.



Arrival time at school

The perfect arrival time for all students is at 8:45—8:55am. This allows children time to unpack their belongings and chat with their friends before the bell rings at 9am. I ask that if you wish to see a classroom teacher in the morning that you arrive prior to 9am. If you need to see the teacher for an extended period of time, please make an appointment with them at a mutually agreeable time. If you are running late to pick your child up, please ensure that you contact the school so that we can inform your child. It is also a great courtesy to the staff, especially if we have meetings located off site after school. Notifying the school often relieves any stress or anxiety that children may feel with you not being there at 3:30pm. Children who remain on site after 3:45pm will be placed in the After School Care Program and you will be charged for this service. If your child arrives late to school or needs to be collected before the end of the school day, we ask that you ensure that you sign the late arrival and early departure book located in the foyer of the office. It is vital that this is kept up to date, in the event of an emergency. If you are in the school grounds for more than half an hour or are helping in the classroom, we ask that you sign in using the visitor book located in the foyer near the office.

School Fees

When making Bpay payments can you please inform the school by email or in person what the payment is for. The department accounting system only informs us of the amount you pay but not what it is for. Alice needs to be informed as to what you wish the money will be allocated for against your account.

School Uniform

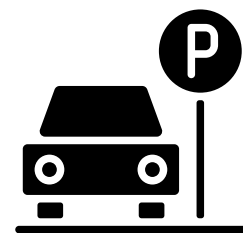
During term 1, all students are required to wear a school hat at recess and lunch time. The policy of NO HAT, NO PLAY will be enforced. Uniforms can be purchased from the Uniform Shop in Bacchus Marsh.

Breakfast Club

Breakfast Club returns on Wednesday the 7th of February. The serving of breakfast will begin at 8:30 and run until 9:00am. Cereal, toast, hot porridge, spaghetti and baked beans are just a few of the things on offer for breakfast. Soup at lunch time will be offered when the weather becomes cooler. All of this is for free thanks to the School's Breakfast Club program run by the "Food Bank".

Car Park:

We are fortunate enough to be able to park on site at Coimadai, however to ensure everyone's safety we ask that all families model our car park expectations. When driving on the school grounds the speed limit is 10km. When parking in the car park, we ask that you park at a 90° angle. All pedestrians in the car park are to walk on the grey stoned paths and not cut across the car park (white parking area). This is extremely important, as cars reversing may not see a young child behind their car if they are walking across the parking area.



Student Book & Stationary

All student stationary must be purchased by parents. Those families who opted to purchase the online packs, these have been delivered to school and these will be given to students to take home for labelling. We ask that all items be returned as soon as possible. Teachers will then hand out books and equipment for students for use and extra supplies will be stored in classroom cupboards for future use. Families who chose to purchase the booklist themselves, we would appreciate it if all items can be brought into school as soon as possible. Grade 3 students who wish to purchase a computer for use at school need to purchase these privately. Any family wishing to obtain details of how to purchase a netbook please visit the office for the details. If family wishes to discuss school fees please do not hesitate to see either Alice or myself in the office.

Pupil Free day - 12th March

Tuesday the 12th of March has been set aside as a staff curriculum Day. Our school will join with other schools in the MCG school's network and attend PD learning at Earth Ed in Ballarat. Osh Club will open for the entire day if there are around 15 students enrolled.



Camps, Sports, Excursion Fund

Families holding a valid means-tested concession card or temporary foster parents are eligible to apply. \$125 per year is paid for eligible primary school students. Payments are made directly to the school and are tied to the student. To be eligible for the fund, a parent or legal guardian of a student attending a registered Government or non-government Victorian primary or secondary school must:

- on the first day of Term one, or;
- on the first day of Term two;
- a) Be an eligible beneficiary within the meaning of the State Concessions Act 2004, that is, be the holder of a Veterans Affairs Gold Card or be an eligible Centrelink Health Care Card (HCC) or Pensioner Concession Card (PCC) holder, OR
- b) Be a temporary foster parent, and
- c) Submit an application to the school by the due date.

Parents who receive a Carer Allowance on behalf of a child, or any other benefit or allowance not income tested by Centrelink, are not eligible for the CSEF unless they also comply with one of (a) or (b) above.

Application forms should be completed and lodged with schools by 20th February 2024, as payments are made from March. However schools will be able to accept and process applications up until the end of term two each year. If you believe that you are eligible for this benefit, please contact the office.

Conveyance Allowance Program

The conveyance allowance is a form of financial assistance to help families in rural and regional Victoria with the cost of transporting their children to their nearest appropriate school/campus. The conveyance allowance is available to eligible students travelling by public transport, private car and private bus. The conveyance allowance is also available to eligible students whose nearest school is not serviced by a free school bus.

Eligibility criteria

The eligibility criteria varies depending on the type of school attended and where it is located.

Students attending a government or non-government school must:

attend their nearest government or non-government school/campus appropriate to their year level at which admission is permissible

- reside outside Melbourne's metropolitan conveyance boundary
- reside 4.8km or more by the shortest practicable route from that school/campus attended
- be of school age (5 to 18 years old at time of application) and reside in Victoria.

Payment amounts

Depending on how a student travels to school, an eligible student may be granted a conveyance based on:

- the least expensive public transport fares; and/or
- a distance based allowance when travel is by private car and/or private bus.

Families who received this payment in 2023 have already been processed. If you believe that you are eligible, please contact the office. These forms need to be completed and returned to the school by Monday, 19th February, 2024.

HAPPY BIRTHDAY

Happy Birthday to the following students who have birthdays this week.

Joey, Benji and Noah

We hope you had a lovely day celebrating your special day with family and friends.

FIRST DAY OF SCHOOL



Emergency Procedures

When on site, please ensure that you sign yourself and any other person/child with you into our visitors book.

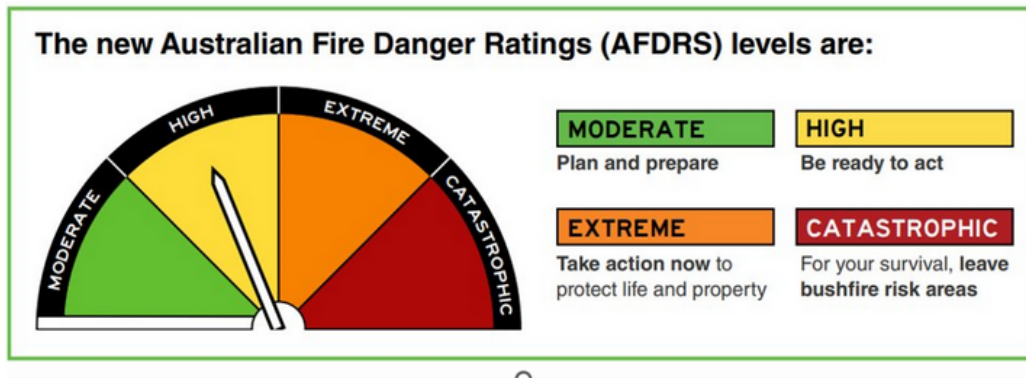
If the emergency alarm is sounded, please evacuate immediately (external to the oval—road end, internal to the library) via the most direct route.

Once in the designated area, staff will ensure that all personnel are present and accounted for—the sign in book will be used to ensure all visitors to the site are present. This is why it is vital that you sign in.

Remain in the designated area until further instructions are given by the incident commander. No one will be allowed to return to the classrooms etc. until the emergency services have deemed the site safe.

Working with Children check

If you are wanting to volunteer at Coimadai Primary working across the school it is essential that you have a current **Working With Children Check**. Please provide a copy of this to the office. If you need assistance obtaining a WWCC please come into the office for support. Applications can be processed online at <http://www.workingwithchildren.vic.gov.au/home/>



SCHOOL PROCEDURES FOR THE BUSHFIRE SEASON

Fire danger ratings and warnings are used in Victoria to provide clear direction on the safest options for preserving life.

Schools and children's services listed on the DET Bushfire At-Risk Register (BARR) will be closed when a Catastrophic fire danger rating day is determined in their Bureau of Meteorology district. **Our school has been identified as being one of those at high bushfire risk and is listed on the BARR.**

Where possible, we will provide parents with up to four days notice of a potential Catastrophic Fire Danger Day closure by letter [and SMS message/phone tree]. A Catastrophic Fire Danger Day will be determined by the Emergency Management Commissioner no later than 1:00 pm the day before the potential closure. Once we are advised of the confirmation of the Catastrophic Day we will provide you with advice before the end of the school day.

Once confirmed, the decision to close will not change, regardless of improvements in the weather forecast. This is to avoid confusion and help your family plan alternative care arrangements for your child. It is also important to note that:

- No staff will be on site on days where the school is closed due to a forecast Catastrophic Day.
- School camps will be cancelled if a Catastrophic fire danger rating day is determined for the Bureau of Meteorology district in which the camp is located.

Our Bureau of Meteorology district is Central Victoria.

On these Catastrophic rating days families are encouraged to enact their Bushfire Survival Plan - **on such days children should never be left at home or in the care of older children.**

Fire Drill

Please be advised that we are hosting Fire Drills in the coming weeks. If your child comes home and states that there was a fire at school on this day and you have had no notification from the school, please be advised that it is a drill.



Important Dates

February

13th Parent -teacher interviews

15th Parents and Friends AGM and 1st meeting for the year

27th Feb -Sporting schools Athletics Program begins

March

1st BMPSSA Swimming Carnival

5th March Proposed School Council Meeting

11th March Labour day - Public Holiday

12th March Curriculum Day - Pupil Free Day

12th NAPLAN testing begins

15th Small Schools Sports Day - Mason Lane

Cyber Safety Parent information session - Shire Hall

28th School dismissed at 2:30 for Term 1 holidays

29th Good Friday - Public Holiday School holidays begin

April

15th Term 2 begins

24th BMPSSA Athletics Carnival for Years 4/5/6

May

1st -3rd Year 4/5/6 Melbourne Camp

9th BMPSSA Cross Country Carnival

June

6th Winter Sports Years 4/5/6

17th -27th whole School Swimming Program

28th School dismissed at 2:30pm for Term 2 Holiday

July

15th Term 3 commences

August

Summer Sports Years 4/5/6

September

20th School dismissed 2:30 for term 3 holidays

October

7th Term 3 begins

7th -9th Year 2/3 Billabong Camp, Echuca

15th Year 2/3 Big Bash Cricket Day

18th Prep/1 sleepover/ activity day

December

20th Last day of the school year





Things to look forward to this week in OSHClub

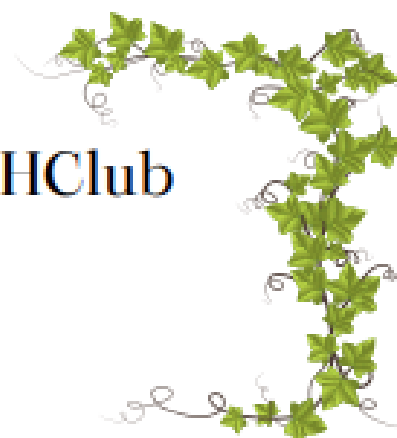
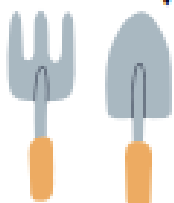


Tuesday Morning

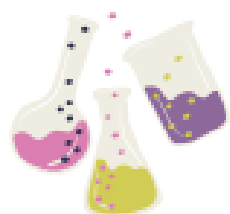
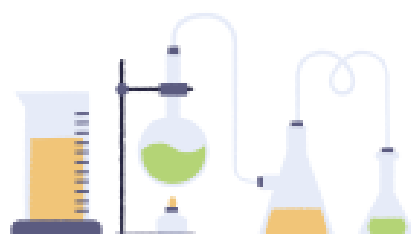
Making clay earrings
and
Special Breakfast-
Hashbrowns

Wednesday

Planning and designing our OSHClub
vegepatch



Thursday



science experiment in the
afternoon

